

AIR PHOTO EVIDENCE

by [JOHN CLIVE BALL](#)

[1. Introduction](#)

[2. Technique of Air Photo Interpretation](#)

[3. Air Photo Archeology](#)

[4. Mass Graves](#)

[4.1 Hamburg, Katyn, and Bergen-Belsen](#)

[4.2 Mass Graves in So-Called Extermination Camps](#)

[4.2.1 Treblinka](#)

[4.2.2 Belzec, Sobibor, Majdanek](#)

[4.3 Babi Yar](#)

[5. Mass Extermination in Auschwitz-Birkenau](#)

[5.1 Alterations on Air Photos of Auschwitz-Birkenau](#)

[5.2 Mass Graves and Mass Cremation](#)

[6. Conclusions](#)

[Hamburg, Katyn, Bergen-Belsen](#)

[Sobibor, Belzec, Majdanek](#)

[Auschwitz-Birkenau](#)

[The Bottom Line](#)

1. Introduction

During the 1930s German scientists and engineers pioneered aerial photography and developed it to high technological standards which the Allies did not attain until during World War Two. During the Second World War German reconnaissance fliers took millions of photos of the contested areas as well as of areas in enemy territory. After the War these photos fell into American hands, and have been stored in the National Archives Air Photo Library in Alexandria, Virginia, ever since. The Soviets, British and Americans also took air photos of Germany and the German-occupied territories as of late 1943. This chapter shall examine a few of these photos to see what they can reveal about the events alleged to have taken place at certain sites in connection with the 'Final Solution of the Jewish Question'.

2. Technique of Air Photo Interpretation

The correct interpretation of an air photo depends not only on the expertise of the interpreter, but also on the resolution of the photo and on the sharpness of its focus, in other words, on the quality of the cameras, films and the photographing technique (eg. compensation for the motion of the airplane). The technique of stereoscopy in particular has effected great improvements in air photo interpretation. In this technique, two photos of the same area are taken in rapid succession. Due to the motion of the airplane, the angle at which the photos are taken will have changed somewhat in this brief time. If these two slightly different photos are then viewed through a stereoscope, one picture with each eye, the result is a three-dimensional effect that allows for the easy differentiation between raised and flat objects on the ground.(1)

3. Air Photo Archeology

Air photo archeology was used as early as 1938 to locate the sites of medieval, ancient or even Stone Age settlements.(2) An element of vital importance to the discovery of ancient, extinct settlements is the fact that the remnants of these settlements - remnants which are generally sub-surface ie. underground today - are

indicated by slight changes in topography, or even in the vegetation on the earth's surface. These minute differences can be made very clearly visible from great elevations. If, on the other hand, larger-scale disruptions of the soil involving disturbances of the vegetation and the nature of the soil date back only a few months, these changes are very easy to discern on air photos even if these disturbances have been covered up so as to prevent detection on ground level.

4. Mass Graves

4.1 Hamburg, Katyn, and Bergen-Belsen (3)

The Allied bombing of Hamburg in late July 1943 - 'Operation Gomorrah', as the British called it - claimed more than 100,000 lives. Some 40,000 of these victims were buried in the Ohlsdorf cemetery, in four mass graves of 10,000 bodies each.(4) Each of the graves is some 130m long, 16m wide and approximately 3.5m deep (426 x 52 x 12 ft.).

In spring of 1940 the Soviets shot about 25,000 Polish officers and intellectuals in a forest near Katyn and at other locations in eastern Poland, and buried them in a number of mass graves.(5) In 1943 some of them were discovered by the Germans, and investigated by an international delegation. The graves found, containing more than 4,100 bodies, covered a total area of 96m x 6m and were roughly 3.5m deep (315 x 20 x 12 ft.).

In early 1945 the British established four mass graves near the former concentration camp Bergen-Belsen, to accommodate the countless typhus victims from that camp which had been dreadfully overcrowded near the War's end.(6) These graves measured about 20m x 7m x 3.5m (66 x 23 x 12 ft.) each and contained some 1,000 bodies each.

As we can see, these graves mentioned above held approximately 1 to 2.5 bodies per cubic meter (1 to 2.5 per approximately 35 cu.ft.). Under realistic conditions, the maximum possible density would be roughly 8 bodies per cubic meter (10 per 44 cu.ft.), where the top vertical 1m (3 ft.) of the grave consists only of a covering soil layer - meaning that, for a grave 3.5 m (12 ft.) deep, the greatest possible gross density is about 6 bodies per m³ (6 per approximately 35 cu.ft.). Thus, the mass graves of Katyn, Hamburg and Bergen-Belsen were not even filled to their maximum capacity.

In estimating the surface area required for mass graves, it must be kept in mind that the soil excavated takes up a greater volume than the graves themselves do, due to the loosening of the soil. What is more, the material excavated can be piled up only so steeply. Postulating, for example, rectangular graves of 15m (50 ft.) width, and allowing 15m (50 ft.) of space beside each grave to accommodate the excavated material - ie. 15m + 15m, or 50 + 50 ft. breadth per grave (in fact a much too conservative estimate) - then for an excavation depth of 3.5m (about 12 ft.) and a gross density of 6 bodies per m³ (roughly 6 per 35 cu.ft.) the minimum surface area required for mass graves for a given number of bodies is indicated in Table 1.

Table 1: Surface Area Requirements for Mass Graves

# Bodies	Surface Area Needed
1,000	10m x (5+5)m = 100m ² (1,080 sq.ft.)
10,000	50m x (10+10)m = 1,000m ² (10,800 sq.ft.)
25,000	83m x (15+15)m = 2,500 m ² (26,900 sq.ft.)
100,000	4 x 83m x (15+15)m = 10,000 m ² (108,000 sq.ft.)
1,000,000	16 x 210m x (15+15)m = 100,000 m ² = 0.1 km ² (1,080,000 sq.ft, 25 acres)

4.2 Mass Graves in So-Called Extermination Camps

4.2.1 Treblinka



Illustration 1: Treblinka, May 15, 1944

Illustration 1 shows an air photo of the Treblinka B camp, taken on May 15, 1944.⁽⁷⁾ This is the place where, according to the standard literature, 700,000 to 1.2 million people were killed, buried in the southeastern corner of the camp, later dug up again and burned - all between mid-1942 and autumn of 1943.⁽⁸⁾ The camp was demolished in late 1943.

This and other photos reveal the following: the surrounding land was cultivated right up to the edge of the camp; by virtue of the flat, treeless landscape it was possible to see right into the camp from the fields, as well as from the road running northeastward and from the town of Wolka Okraglik, only half a mile away; the place in the southeast area of the camp which the witnesses describe as the location of the mass graves is less than 10,000 m² (108,000 sq.ft.) in area. Therefore no more than 100,000 bodies could have been buried there. Mass graves for about 1,000,000 bodies would have required an area roughly equal to that of the entire camp (about 25 acres);

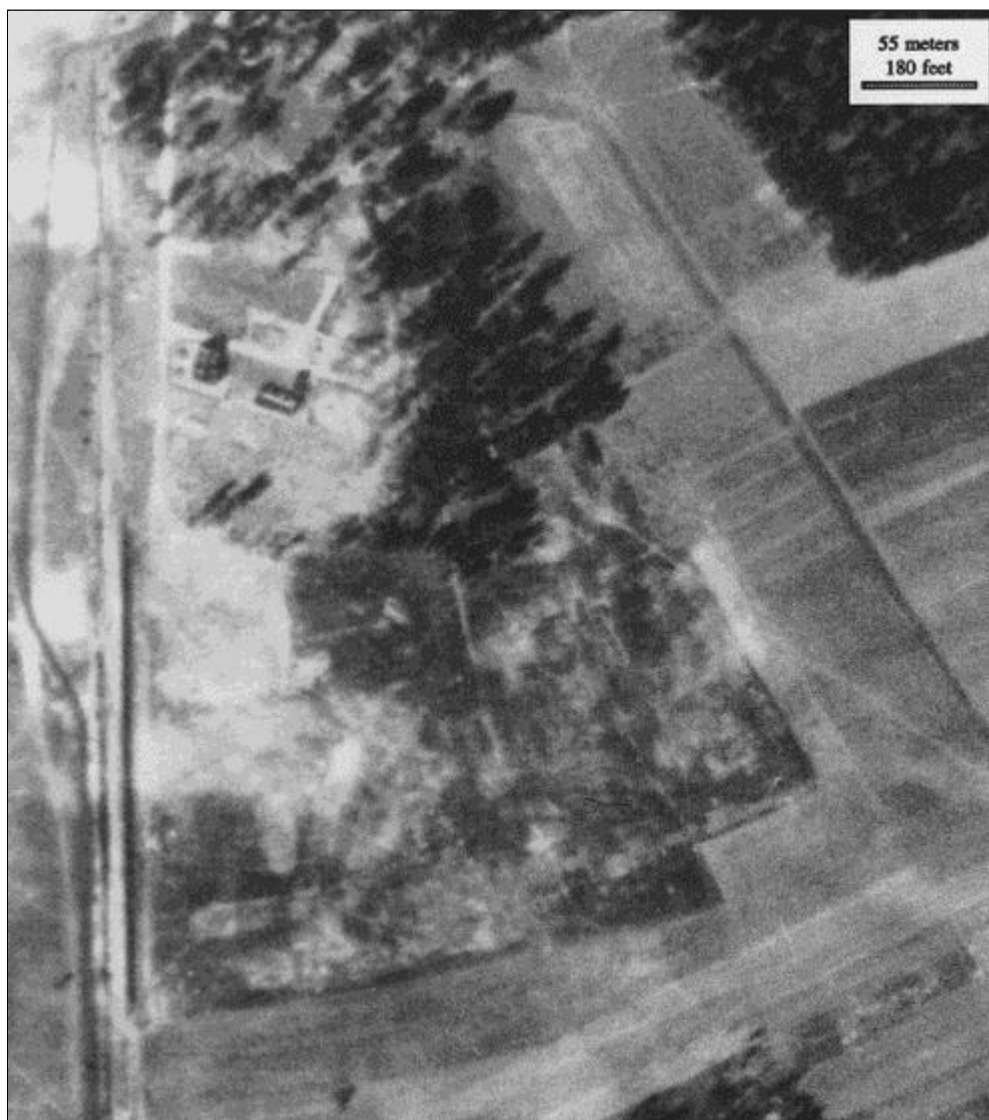


Illustration 2: Treblinka, November, 1944

Illustration 2 shows an air photo from November 1944.⁽⁹⁾ Here the area is overgrown fairly uniformly with vegetation (grass, weeds). We can see that: except in the northernmost areas, there are no signs of any remnants of building foundations. Even if these had been removed, the vegetation would not grow as well over these areas. The massive concrete gas chamber buildings attested to by witnesses were not present here; at most, there may have been temporary barracks without stone or concrete foundations; large-scale movements of the soil and mass cremations in the southeastern part of the camp would have resulted in poorer growth of vegetation there than elsewhere in the camp, due to the destruction of the topsoil ie. its mixing with deeper soil layers. Since this is not the case, disturbances of the soil as well as cremations can be ruled out for this area of the camp. The same goes for the surrounding agricultural areas; contrary to witness accounts, no trees or bushes were planted on the camp grounds for camouflage purposes.

4.2.2 Belzec, Sobibor, Majdanek (10)

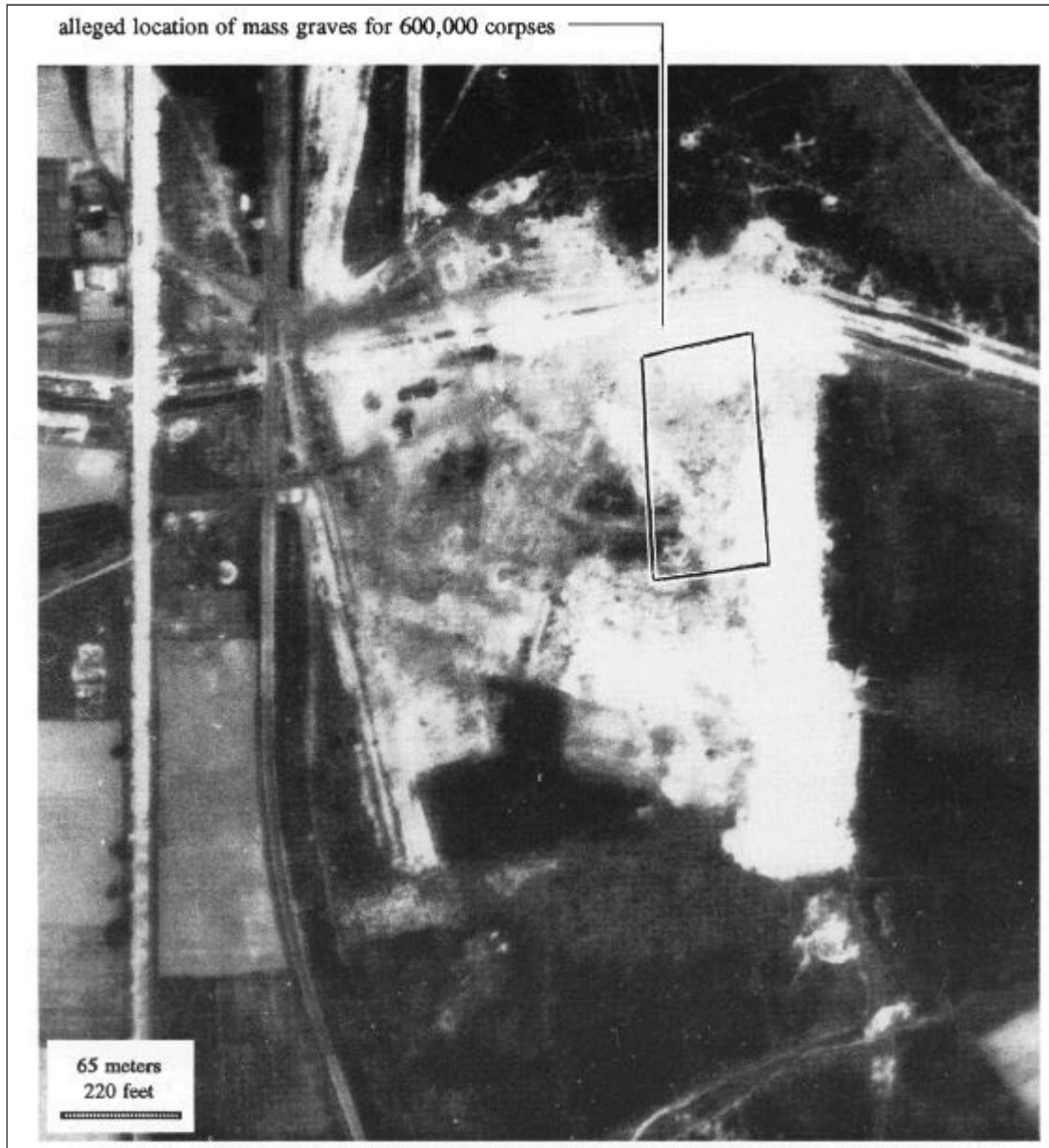


Illustration 3: Belzec, May 16, 1944

Much like Treblinka, the Belzec camp could easily be looked into from the nearby rail line and road. The town of Belzec was located about 1 mile north of the camp, which had been built on a hillside, into the forest. Air photos from 1944,⁽¹¹⁾ in other words from after the camp was dismantled, show that the area of the camp where witnesses claim mass graves containing some 600,000 bodies as well as their later cremation sites were located, had an area of approximately 7,000m² (75,300 sq.ft.). No more than 70,000 bodies could thus have been buried there - provided that the rocky soil would even have allowed for the excavation of 12-ft.-deep graves in the first place. There is no evidence of any foundations from former buildings, nor of any large-scale movements of the soil or of mass cremations. There are no signs of any such activity anywhere in the surrounding area either.



Illustration 4: Sobibor, May 30, 1944

It is claimed that in Sobibor 100,000 of the total 150,000 victims were buried before being exhumed later and being cremated along with the rest of the victims. The air photo from 1944,[\(12\)](#) also taken after the camp was dismantled, shows this camp as having covered an area of roughly 50,000m² (12.4 acres). Some 10,000m² (107,600 sq.ft.) - fully 1/5 of the total camp area - would have been needed to bury the victims. However, the air photo shows that the ground in the camp area was not disturbed. There are no signs of former building foundations, large-scale movements of earth, or cremation sites.

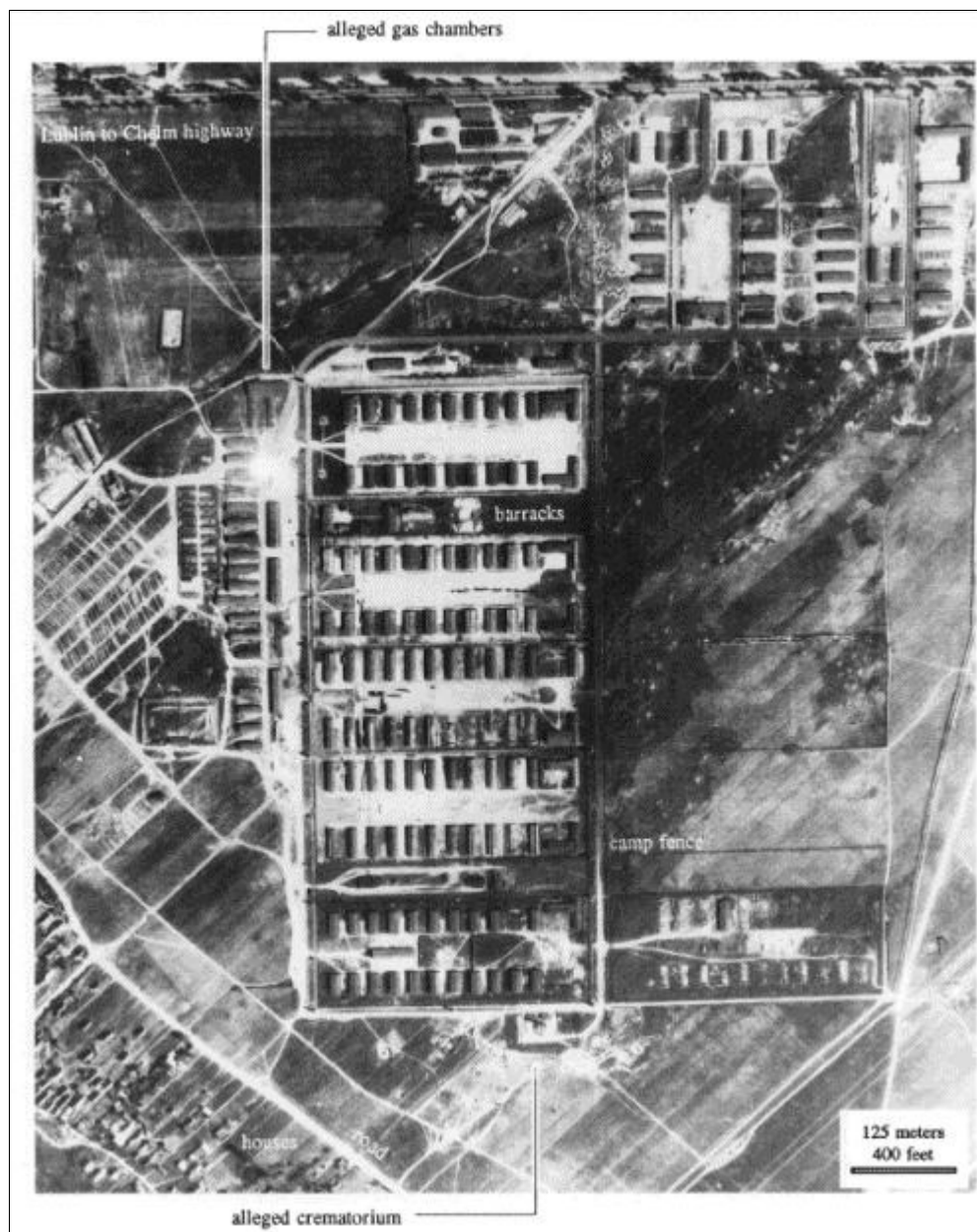


Illustration 5: Majdanek, Sept. 18, 1944

The Majdanek camp is located at the outskirts of the city of Lublin. Just as for Treblinka, the surrounding fields were cultivated right up to the camp boundary. The alleged gas chambers and the crematorium were outside the camp proper, openly visible and accessible to thousands of people living in the suburbs of Lublin.

Alleged gas chambers standing alone outside of camp fence

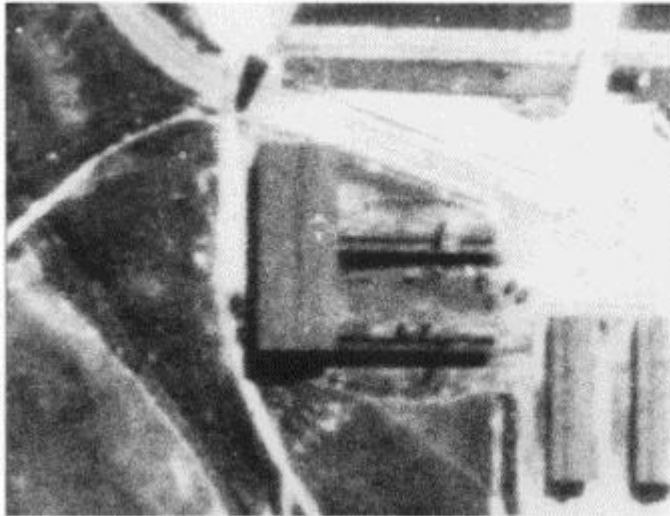


Photo 3 - September 18, '44: One of the two buildings extending out of the right side of the large building in the middle of the photo is alleged to have contained gas chambers. The top building extension has one chimney and the bottom one has two chimneys. The buildings are outside the fence on the main road leading into camp and there are no guard towers.

25 meters
80 feet

Illustration 6: Majdanek, Sept. 18, 1944

4.3 Babi Yar

It is said that after the city of Kiev was occupied by German troops the Jews of this city were taken to Babi Yar, a ravine at the northwestern edge of the city, near the Jewish cemetery. According to eyewitness accounts, they were shot there, thrown into the ravine, and buried - according to some witness statements, the ravine was also blasted and the bodies buried under the rubble.

In late summer of 1943, when the Front retreated again, the bodies were allegedly exhumed and cremated on gigantic funeral pyres or in pits. These activities allegedly ended on September 28, 1943, when the Kiev area was already part of the main battle zone.[\(13\)](#)



Illustration 7: Babi Yar, September 26, 1943

Illustration 7 shows the ravine of Babi Yar on an air photo taken by the Luftwaffe on September 26, 1943.⁽¹⁴⁾ The part of the ravine (near the Jewish cemetery) where the massacre allegedly took place is shown as enlargement in Illustration 4. What we see is in fact a placid and peaceful valley. Neither the topography nor the vegetation has been disrupted by human intervention. There are no access roads for the transport of humans or fuel, no fuel depots, no excavations, no burning sites, and no smoke.

We may conclude with certainty that no part of the Babi Yar ravine was subjected to topographical changes of any magnitude during the war years right up to the Soviet reoccupation of the area. The vegetation in this valley was also not disturbed.⁽¹⁵⁾ Hence, there can have been no mass graves in these locations, and the mass cremations attested to can also not have taken place at this time.

5. Mass Extermination in Auschwitz-Birkenau

5.1 Alterations on Air Photos of Auschwitz-Birkenau

Contrary to the photos of the camps in eastern Poland, the photos of Auschwitz (Illustrations 8 and following) were taken by the Americans. It took the Allied landing in Italy in autumn of 1943 before the Americans were able to bomb the industrial area of Upper Silesia; Allied reconnaissance flights over this area therefore did not begin until the winter of 1943/44. However, the corresponding air photos were not submitted to the National Archives by the CIA, and thus made accessible to the public, until the late 1970s. It was also the CIA which published the first photos of Auschwitz-Birkenau in 1979.⁽¹⁶⁾

The Americans took many series of photographs of the Upper Silesian industrial area, and some of them are

of excellent quality. Unfortunately, the Auschwitz-Birkenau camp group is shown on only about half a dozen photos, all of which are of mediocre or poor quality. One qualitatively excellent sequence of photos from June 26, 1944 breaks off just before Auschwitz. While it is possible that the cameras were turned off immediately after the plane flew over the main point of interest, namely the synthetic rubber plant in Monowitz, it seems more probable that these photos of excellent quality and resolution were in fact removed before the public could view them. We shall see the grounds for this supposition in the following.

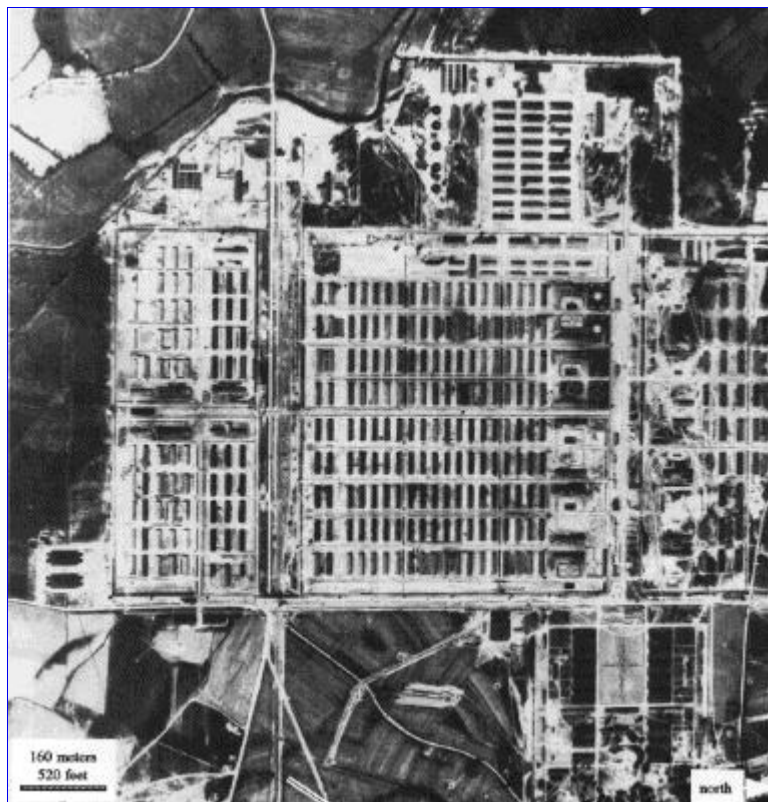


Illustration 8: Birkenau, August 25, 1944

These links offer much enlarged versions of parts of Illust.8:

[**Illustration 8A: Birkenau, Aug 25, 1944, south side, CIA labeled**](#) (512K)

[**Illustration 8B, blowup of section of Illus.8A**](#)

First of all, it is interesting that in Birkenau, as well, the surrounding fields were cultivated right up to the camp boundary, which would have defeated any attempts to keep events in the camp secret. In this context I would like to draw special attention to two August 25, 1944 photos of the Birkenau camp.⁽¹⁷⁾ These photos were taken within 3.5 seconds of each other, which allows for three-dimensional viewing through a stereoscope. Let us take a look at the first of the two pictures.



Illustration 9: Birkenau; 9/13/44 (top), 8/25/44 (bottom), blowup of Illust. 8A

Illustrations [9A](#) (93K), [9B](#) (192K), and [9C](#) (780K), stepped blowups of Illust.8A

Illustration 9 is an enlargement of the detail around Crematoria II and III. Illustration 10 is a schematic diagram of this photo section. The CIA identified the patches on the roofs of Mortuaries I of the two crematoria as input hatches for Zyklon B. Even without three-dimensional viewing one can see that these patches on the roofs cannot be input hatches: the alignment of the patches does not agree with the direction of the shadow cast by the crematorium chimney; on a photo from September 13, 1944, the patches on Crematorium III retain their direction and shape even though the position of the sun has changed; [\(18\)](#) on that same photo the patches on Mortuary I of Crematorium II are missing; the length of the shadows corresponds to input hatches 4.5 ft. wide and rising 10 to 13 ft. above the roof - in other words, large chimneys, not the approximately 20-inch-high hatches attested to by witnesses; these jagged, irregular patches cannot be shadows cast by perpendicular, straight input hatches.

Illustration 9a: Birkenau Krematoria, August 25, 1944, enlarged section of Illustration 9 (bottom)

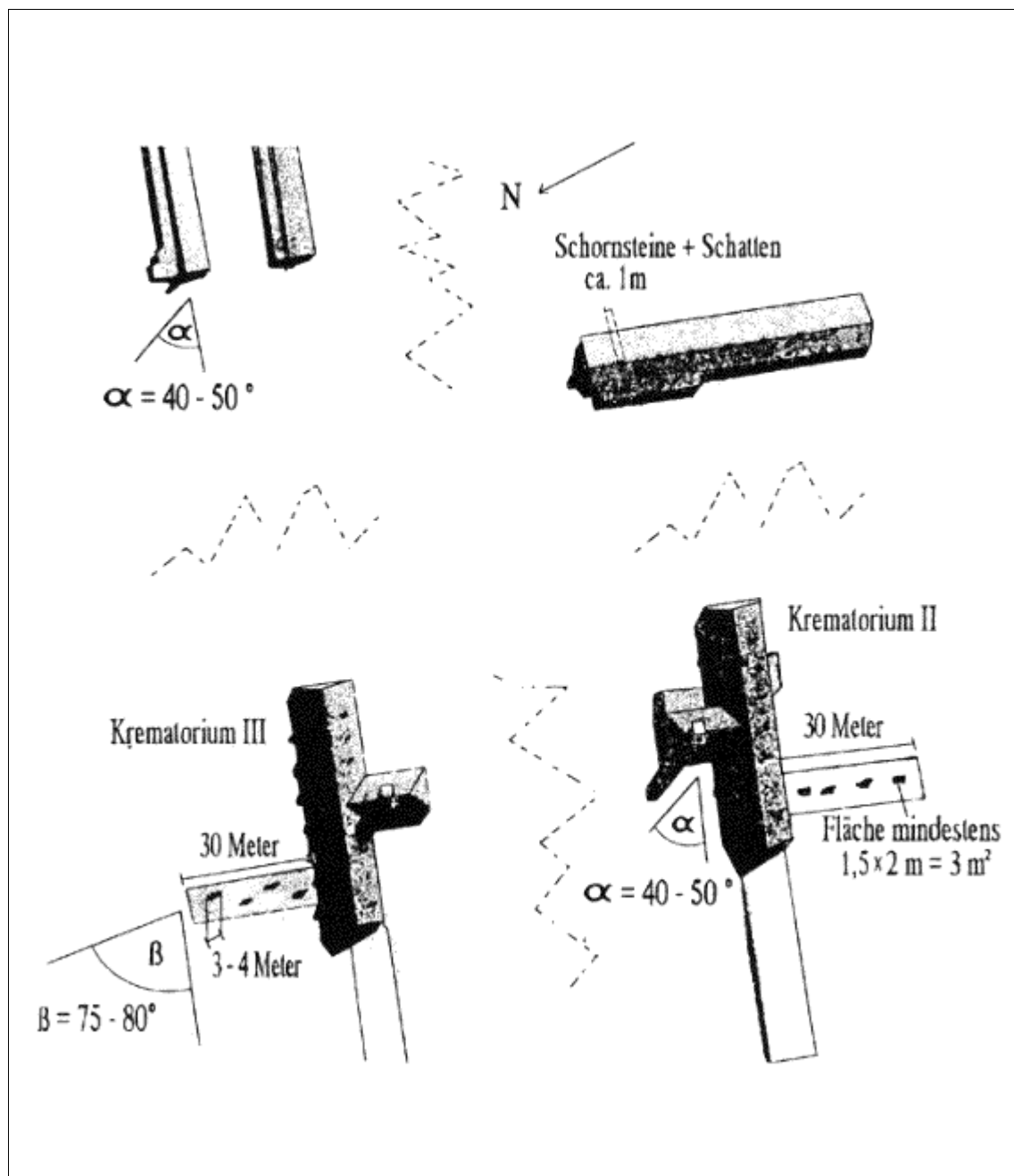


Illustration 10: Schematic of Birkenau Krematoria, from August 25, 1944 photo

(NOTE: The drawing in Illustration 10 was prepared from a doubly reversed print, but all details of angle and dimension are correct. The buildings should be flipped both horizontally and vertically to be in a position to match the photograph.

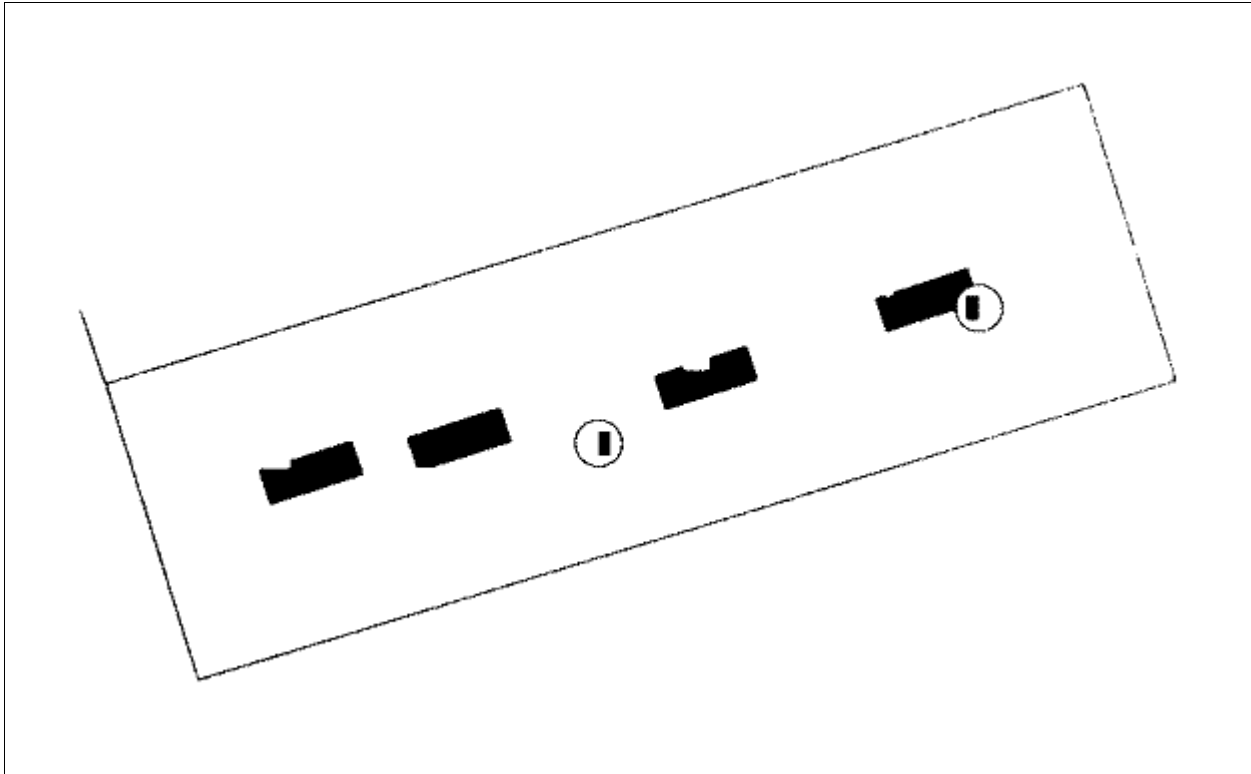


Illustration 11: Schematic of the roof of Krematorium II. Existing holes in the thick steel reinforced concrete slab roof are shown circled. The rest of the roof is solid, there are no openings for the alleged four Zyklon-B entry ports.

Illustration 11, an enlarged section of Illustration 9, reveals the discrepancy between the holes actually present in the roof of Mortuary I of Crematorium II and the patches added to the photo by the forgers. The location and size of the real holes, marked with a circle, do not correspond to the patches added.

According to the CIA, the dark line surrounding both Crematoria II and III was a wall or hedge intended to guard against prying eyes and to prevent attempted escapes. From a vast number of original, ground-based photos of the camp, however, we know that the Crematoria were separated from the rest of the camp merely by a wire mesh fence, which would not show up on an air photo.⁽²⁰⁾ On a photo of May 31, 1944, these dark lines around Crematoria II and III were only incompletely drawn in.⁽²⁰⁾ The same goes for the lines drawn around Crematoria IV and V only on the photo of September 13, 1944.

Viewing these pictures in 3-D, one realizes that neither the alleged wall nor the patches on the mortuaries have any elevation. What is more, the overly dark color of such narrow objects proves that what we have here is an instance of photo-retouching.

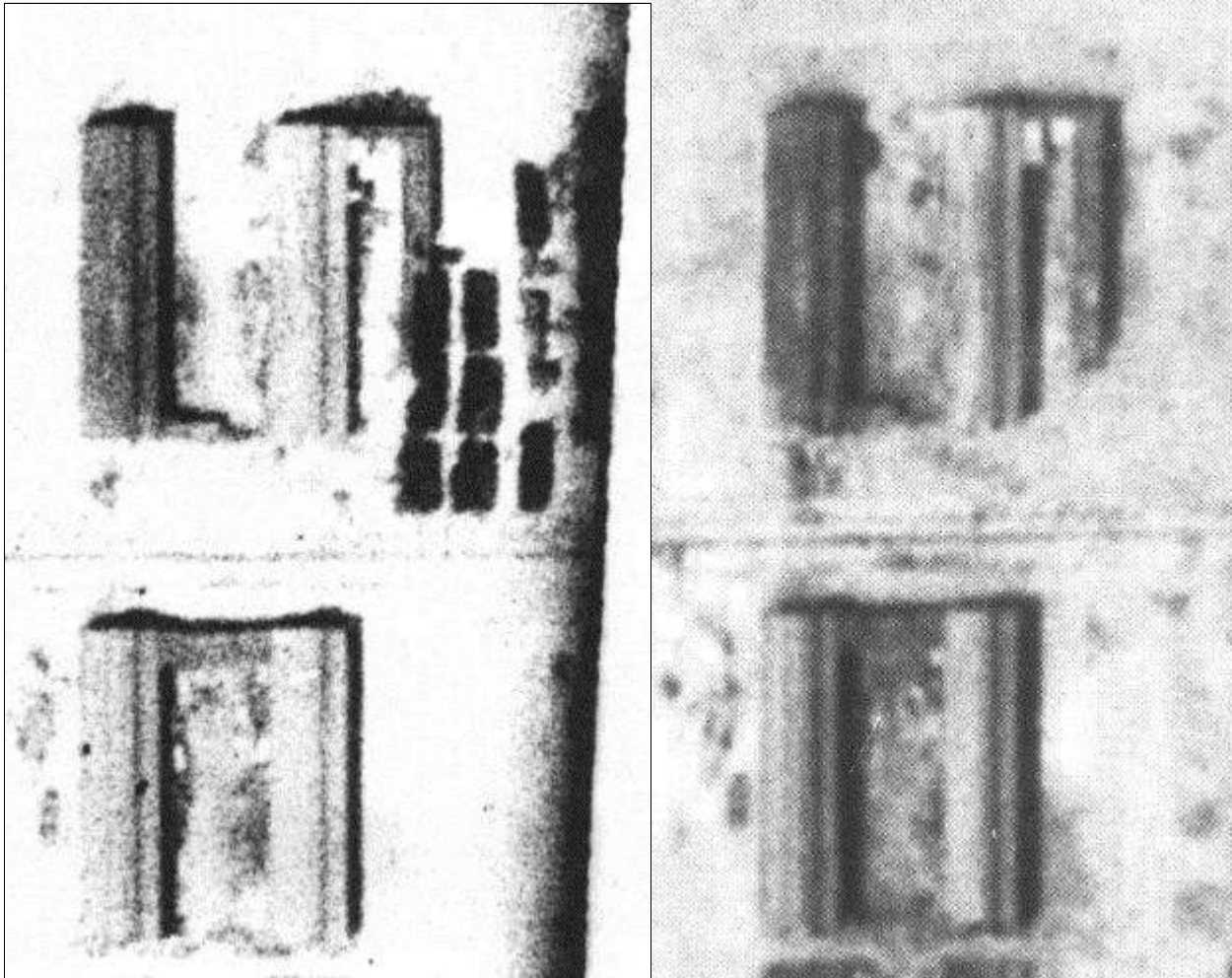
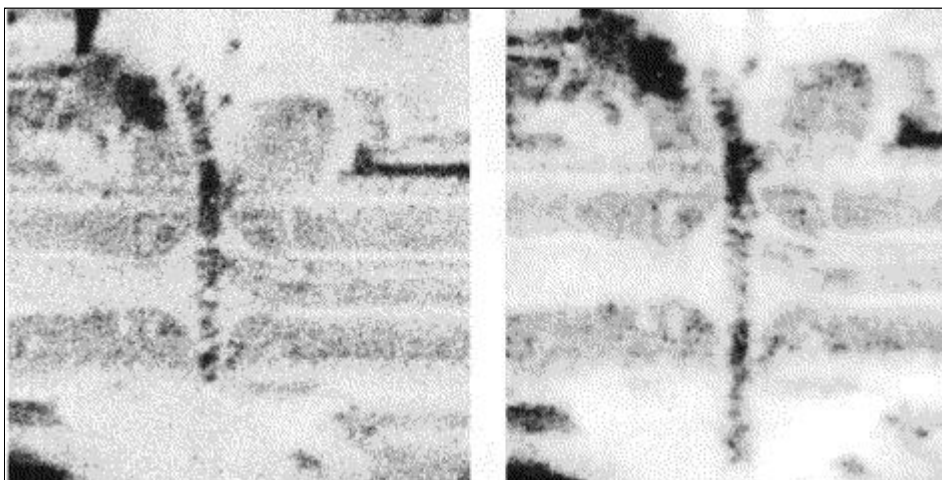


Illustration 12: Birkenau, August 25, 1944, enlarged detail of Illustration 9 (left)

Illustration 13: Birkenau, September 13, 1944, same area as Illustration 12 (right)

Illustration 12 is another enlargement from Illustration 9. In this picture patches were added which, according to the CIA, represent groups of inmates. In this context one must consider that a group of inmates is not a massive block structure which could cast darker shadows than, for example, the barracks beside them. More than likely, therefore, the picture was "helped along a little" here. This assumption is proven by the fact that some of these "groups of inmates" are evidently marching across the roof of a barracks - a physical impossibility. This is shown clearly by the photo of September 13, Illustration 13, where the barracks is also clearly visible, but this time without inmates marching across it. See below.



Illustrations 14 and 15: Birkenau, August 25, 1944, enlarged detail of Illustration 9

Illustrations 14 and 15 show enlargements of details of the two aforementioned photos taken in rapid succession on August 25, 1944. According to the CIA's interpretation this shows a group of inmates on their way to the gas chambers. First one should note that in the 3.5 seconds separating the two exposures, the group of inmates has advanced fully 40 feet, corresponding to a speed of 7.5 mph, in other words, running. That civilians could manage to move that quickly while maintaining a prescribed formation is already highly unlikely; but what is most interesting is the manner in which this group of inmates moves (Illustration 16): it moves in a zigzag - in a line added by a clumsy retoucher.

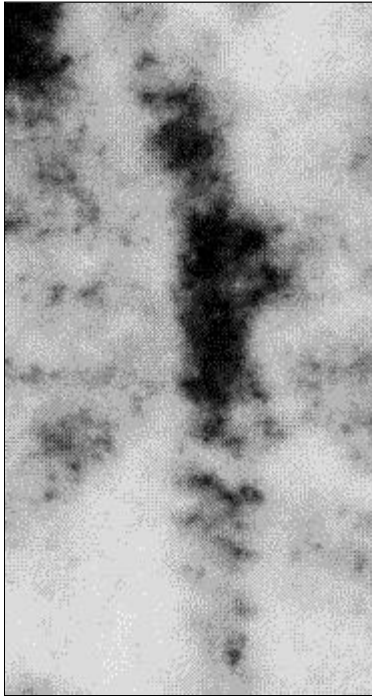


Illustration 16: Birkenau, August 25, 1944, enlarged details of Illustration 9

After realizing these facts of the matter, I went to the National Archives and requested to see the originals, since the photos given to me as originals had clearly been altered. And in fact I was then given air photos which I was assured were the originals. These were indeed of better quality than the negatives I had been given first: due to the better focus, the work of the forgers was considerably more clearly apparent at the same places on the photos. When I pointed this out to the Archives staff, I was told that these were the negatives which the National Archives had received from the CIA in 1979, and that they had always believed that they were in the precise state in which they had been taken out of the reconnaissance planes in 1944. I was told that I was the first member of the public ever to have seen these negatives. Now they would be returned to the archives forever and be handed out only on the request of government agencies such as the CIA.

In light of the poor quality of the forgeries on these air photos it is not likely that the alterations were added by a government agency or by the CIA itself. These authorities have highly qualified staff and advanced technology at their disposal and would have produced forgeries that were perfect, or at least very difficult to expose.

5.2 Mass Graves and Mass Cremation

To the immediate north of the Birkenau camp, near the presumed location of the so-called Bunker I, the air photos reveal rectangular patches which may perhaps stem from old, filled-in mass graves (Illustration 18, right).⁽²¹⁾ Their surface area totals approximately 3,600m² (38,700 sq.ft.). West of the camp, more

rectangles are visible, standing out from their surroundings due to their lighter coloring (totalling about 450m², or 4,800 sq.ft., see Illustration 18, top).

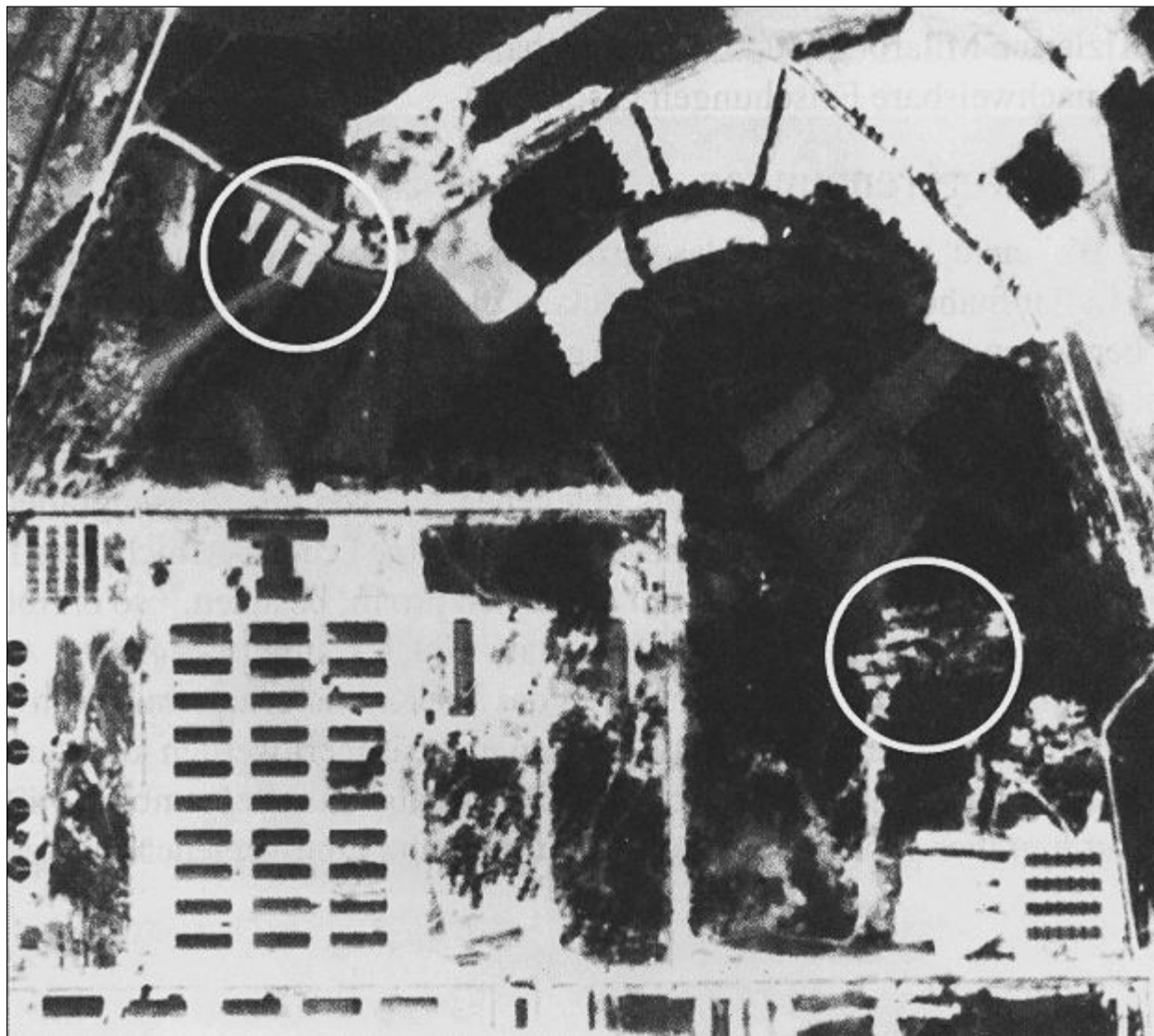
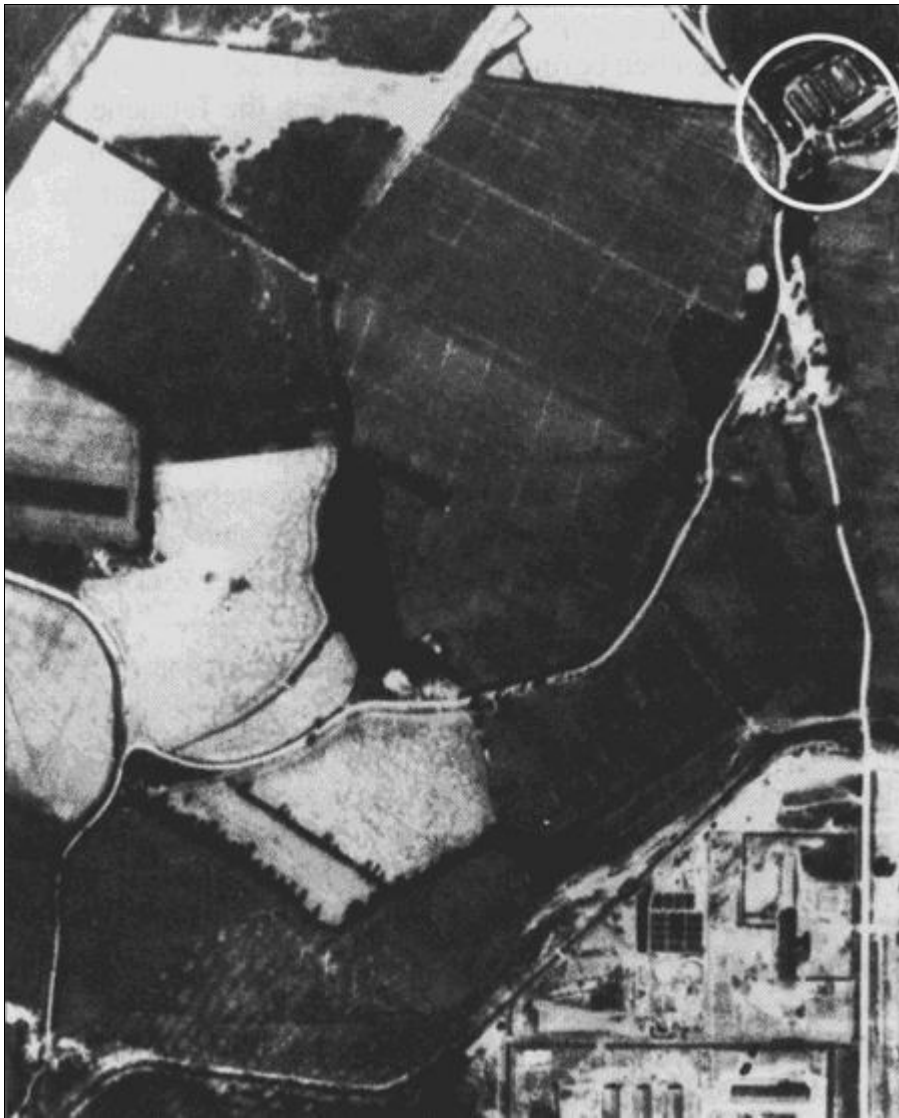


Illustration 18 and 18a



If one assumes that the patches north of the camp are mass graves, that these were 3m (about 10 ft.) deep with a 1m (3 ft.) covering soil layer, and that mass graves have a capacity of at most 8 bodies per m³ (10 per 44 cu.ft.),⁽²²⁾ this indicates a maximum of about 55,000 bodies that could have been contained therein.

Until early 1943, the Auschwitz-Birkenau camp group had only the old crematorium in the Auschwitz Main Camp at its disposal, so that during this time probably not all the dead could be cremated, but had to be buried in mass graves instead. D. Czech reports that as of approximately mid-September 1942 the mass graves in Birkenau were opened and emptied so as to prevent contamination of the ground water supply.⁽²³⁾ From November 1941 to September 1942 some 45,000 inmates died in Birkenau, mostly of typhus.⁽²⁴⁾ On the basis of the coke fuel deliveries, for which documentation exists, it can be determined that the Main Camp crematorium, having only 349.1 metric tons of coke delivered during this period, could have cremated a maximum of 11,400 bodies,⁽²⁵⁾ not all of which came from Birkenau, of course, but also from within the Main Camp itself. Thus one must expect that roughly 40,000 bodies were buried in Birkenau in mass graves between November 1941 and September 1942. This figure corresponds quite well with our calculations regarding the maximum capacity of the presumed former mass graves whose outlines we can detect on the air photos.⁽²⁶⁾

If Czech's statements regarding the opening of mass graves in September 1942 are correct, it seems quite plausible that from this time on until the new crematoria were put into operation in spring/summer 1943, there were indeed open-air funeral-pyre cremations of old, partially decomposed corpses. This work, which was

likely performed by inmates, might represent the factual basis of greatly exaggerated and highly embellished eyewitness statements about perpetual, gigantic mass cremations on pyres and in deep pits. These witness statements generally place the open-air cremations in pits located behind Crematorium V and west of the camp on a meadow near Bunker II,(27) a former farmhouse allegedly renovated to serve as gas chamber. In the process, it is claimed, the great quantities of smoke emanating from the burning sites swathed the camp in dark clouds.(28) Particularly from May to August 1944, during the time of the alleged destruction of the Hungarian Jews and the Jews from the Lodz ghetto, fires are said to have been burning in the fire pits day and night.(29) But the air photo of May 31, 1944 is the only one to show even relatively small drifts of smoke rising behind Crematorium V.(30) Nothing even remotely similar is to be found at any other place, nor on any other photo: there are no considerable quantities of smoke issuing from the chimneys, none in the vicinity of Bunker II, none anywhere else. The photo from September 13, 1944 is the only one to show any large smoke clouds at all, and these have drifted in from the surrounding industrial establishments which the Allies had just bombed. Professor G. Jagschitz's theory, proposing that perhaps the Allies had used filters that resolved the smoke on the photos,(31) is not even close. Smoke cannot be resolved by optical filters; at best, one could use film that is sensitive to a specific range of the electromagnetic spectrum which the smoke does not absorb. This, however, would have required a homogeneous and known composition of the smoke, as well as highly advanced technology at the Allies' disposal at the time. Neither factor is given. The Allied air photos were taken with perfectly normal, simple black-and-white film. If there are no smoke clouds visible on the photos, then there were no incinerations to cause them. Further, in light of the absence of any pits, pyres, fuel depots and heaps of corpses it is downright irrelevant whether the smoke might have been visible or invisible, since there was nothing that could have caused it in the first place. Filters to render fuel depots, burning pits, heaps of corpses etc. invisible have yet to be invented, even today.

6. Conclusions

Hamburg, Katyn, Bergen-Belsen

The mass graves of Hamburg, Katyn and Bergen-Belsen demonstrate how great the area requirements are for mass graves. Due to the area required for the excavated material, which in realistic terms is much greater than the theoretical minimum areas calculated in Table 1, 10,000 bodies need at least 4,000m² (43,000 sq.ft.). Treblinka Mass graves for the alleged 700,000 to 1.2 million victims of this camp would have required 40 times as much space as the witnesses state was available. The ground in the camp area shows no traces of former building foundations, large mass graves or burning pits.

Sobibor, Belzec, Majdanek

As in the case of Treblinka, it would have been impossible in Majdanek or Belzec to keep any mass murder secret; the close proximity of settlements and roads, and the cultivation of surrounding farm land right up to the camp fences, saw to that. In no case is there any evidence for mass graves or burning pits. Babi Yar The ravine of Babi Yar underwent no noticeable changes in topography or vegetation up to the end of the War. There are no signs of human intervention during the time of German occupation. There was no human activity there at the time of the mass cremations attested to by the witnesses.

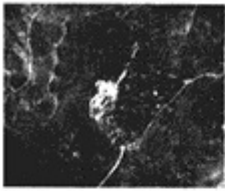

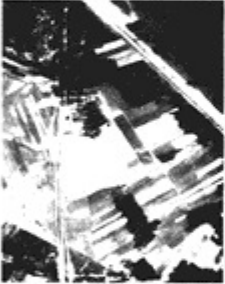

Auschwitz-Birkenau

The few air photos of Auschwitz-Birkenau known to date from the period of December 1943 to February 1945 show no signs of fuel depots, smoke from chimneys or open fires, burning pits or pyres. The photos were altered: Zyklon B input hatches, groups of inmates, and walls around crematoria were retouched onto the photo negatives. Insofar as they still exist, photos of good quality are being kept from the public. One must assume that any actual mass murder activities would not have escaped the notice of the air photo interpreters.

This would have resulted in the bombing of the camp - which, however, was carefully refrained from.

The Bottom Line

To this day there is no air photo evidence to support the alleged mass murder of the Jews at any location in Europe occupied by the Germans during World War Two. Further, air photo analysis refutes the claim that the Nazis had intended, at whatever time, to keep events in the alleged extermination camps secret. In many cases the air photos provide clear proof that some of the events attested to by witnesses, such as the destruction of the Hungarian Jews or the mass executions at Babi Yar, did not in fact take place. We may hope that the release of Soviet air photos dating from the time the camps were in operation will shed further light on these issues. The fact that these photos have not been published to date may already speak for itself. That the photos in Western hands were altered in order to incriminate Germany, and were first published by the CIA, is also very significant indeed.

Final	Conclusions	
	Katyn No one witnessed the forest murders. The graves held 4,100 and measured 96 x 6 meters (310 x 20 ft.)	Hamburg The mass graves for 40,000 bombing victims measured 520 x 16 meters (1685 x 52 feet)
	Auschwitz - Birkenau There were <i>no</i> coal storage yards, fences, smoke from chimneys or pits, or other evidence of mass murder in the visible crematoriums after May, '44. If cremations were occurring spies would have <i>seen</i> them, air photo interpreters would have <i>verified</i> them, and planes would have <i>bombed</i> them.	
	Treblinka There is <i>no</i> evidence any more than 5 buildings surrounded by farms and villages occurred at the alleged camp site. To bury 800,000 would have taken an area <i>40 times</i> larger than the alleged grave site.	Belzec There is <i>no</i> evidence of the alleged camp but rather a visible hillside which was logged from 1940 to '44. To bury 600,000 would have taken an area <i>33 times</i> larger than the alleged grave site.
	Majdanek The alleged gas chambers and crematoriums were <i>visible</i> from hundreds of homes in the Lublin suburbs.	Sobibor In 1944 there was <i>no</i> disturbance of soil from the alleged railway, buildings, or mass cremations at the alleged camp.
<p>To conclude there is <i>no</i> air photo evidence mass murders and cremations occurred at or near the Birkenau crematoriums, which were visible from both inside and outside the camp, or the Auschwitz I or Majdanek detention camps. There is also <i>no</i> air photo evidence mass murders, burials, or cremations occurred at the alleged Treblinka camp, which does not appear to have had any more than five buildings, or at the Sobibor or Belzec logging camps. There is also <i>no</i> evidence of mass cremations at Babi Yar ravine.</p>		

(1) Due to the photomechanical reproduction process, some of the pictures shown in this chapter are unfortunately of considerably poorer quality than the originals, so that they no longer show all the details which are clearly visible on the original exposures.

(2) cf. O. G. S. Crawford, "Luftbildaufnahmen von archäologischen Bodendenkmälern in England", in: Luftbild und Luftbildmessung No. 16, Berlin: Hansa Luftbild, 1938, pp. 9-18; cf. also: J. Dassié, Manuel d'archéologie aérienne, Paris: Editions Technique, 1978; L. Deuel, Flug ins Gestern - Das Abenteuer der Luftbildarchäologie, Munich: C. H. Beck, 1977.

(3) For the air photos the reader is referred to my report: J. C. Ball, Air Photo Evidence, Ball Resource Services Ltd., Suite 160-7231, 120th St., Delta, BC, Canada, V4C 6P5, 1992.

(4) M. Caiden, The Night Hamburg Died, New York: Ballantine Books; M. Middlebrook, The Battle of Hamburg, London: McMillan; D. Irving, Und Deutschlands Städte starben nicht, Zurich: Schweizer Verlagshaus, 1967.

(5) F. Kadell, Die Katyn-Lüge, Munich: Herbig, 1991; J. Lauck, Katyn Killings: In the Record, Clifton, NJ: Kingston Press, 1974; A. Paul, Katyn, The Untold Story of Stalin's Polish Massacre, New York: Charles Scribner's Sons, 1989; W. Anders, The Crimes of Katyn, Facts and Documents, London: Polish Cultural Foundation, 1965.

(6) S. Bloch, Holocaust and Rebirth: Surviving Bergen Belsen, New York: Holocaust Library, 1972.

(7) Ref. No. GX 120 F 932 SK, exp. 125.

(8) cf. the chapter by A. Neumaier, this volume. Also: U. Walendy, "Der Fall Treblinka", Historische Tatsachen No. 44, Vlotho: Verlag für Volkstum und Zeitgeschichtsforschung, 1990.

(9) Exact date unknown, Ref. No. GX 12225 SG, exp. 259.

(10) For these camps, cf.: Y. Arad, Belzec, Sobibor, Treblinka: The Operation Reinhard Death Camps, Indiana: University Press, 1987; E. Kogon, H. Langbein, A. Rückerl et.al. (eds.), Nationalsozialistische Massentötungen durch Giftgas, Frankfurt/Main: Fischer, 1983; E. Jäckel, P. Longerich, J. H. Schoeps (eds.), Enzyklopädie des Holocaust, Berlin: Argon, 1993. Due to space limitations these three camps were only briefly mentioned here. For details cf. J. C. Ball, op. cit. (Note).

(11) Ref. No. GX 8095 33 SK, exp. 155.

(12) Ref. No. GX 191 F 910 SK, exp. 122.

(13) cf. the chapter by H. Tiedemann, this volume.

(14) Ref. No. GX 3938 SG, exp. 104 and 105.

(15) This statement can be documented with further air photos showing the valley prior to the war and again after Soviet reoccupation: the vegetation in the valley has grown, but nothing else has changed (May 17, 1939: GX 988 - exp. 48, 49; April 18, 1944: GX 4793 SK - exp. 39, 40). Due to space limitations we have dispensed with showing these pictures here, and chosen one instead that shows the location during the time of the attested-to mass exhumation and mass cremation.

(16) D. Brugnioni, R. Poirier, The Holocaust Revisited: A Retrospective Analysis of the Auschwitz-Birkenau Extermination Complex, Central Intelligence Agency, Washington, 1979; cf. W. Stäglich, Deutschland in Geschichte und Gegenwart 27(3) (1979): 10-14.

(17) Ref. No. RG 373 Can F 5367, exp. 3185 and 3186.

(18) Ref. No. RG 373 Can B 8413, exp. 6V2, J. C. Ball, op. cit. (Note), p. 65.

(19) cf. J. C. Ball, *ibid.*, pp. 45, 63; S. Klarsfeld, *The Auschwitz Album*, New York: Beate Klarsfeld Foundation, 1980; the fence has partially survived to this day: J.-C. Pressac, *Auschwitz: Technique and Operation of the Gas Chambers*, New York: Beate Klarsfeld Foundation, 1989.

(20) Ref. No. RG 373 Can D 1508, exp. 3055, J. C. Ball, op. cit. (Note), pp. 52, 64.

(21) Details from air photo, op. cit. (Note).

(22) cf. the chapter by A. Neumaier, this volume.

(23) D. Czech, *Auschwitz Chronicle, 1939-1945*, New York: Henry Holt, 1989, pp. 108, 242, 275.

(24) cf. J.-C. Pressac, *Les Crématoires d'Auschwitz, la Machinerie du meurtre de masse*, Paris: CNRS, 1993, pp. 144ff.

(25) cf. the chapter by C. Mattogno and F. Deana, this volume.

(26) Some time ago the Polish firm HYDRO KOP carried out drillings in Birkenau at the sites where, according to witnesses, mass graves and/or burning pits had been located. A few parts of the report based on these drillings have been published by U. Walendy in *Historische Tatsachen* No. 60, Vlotho: Verlag für Volkstum und Zeitgeschichtsforschung, 1993. According to this report, charred wood as well as bones and hair were found at some points. A correct interpretation, however, would require access to the entire report. Also, the fragments of the report which are available fail to specify the exact location of the drill sites.

(27) It is claimed that there was another farm house (Bunker I), but its exact location is unknown. It is not visible on any air photos, and so it will not enter into this discussion. It is alleged to have been located at the place where the aforementioned traces of possible mass graves are detected.

(28) Aside from E. Jäckel et.al. and E. Kogon et.al., op. cit. (Note), cf. also: D. Czech, op. cit. (Note), *passim*.

(29) cf. J. S. Conway, "Der Holocaust in Ungarn. Neue Kontroversen und Überlegungen", *Vierteljahrshefte für Zeitgeschichte* 32 (1984): 179-212; J. Wulf, "Lodz. Das letzte Ghetto auf polnischem Boden", *Aus Politik und Zeitgeschichte* 10(42) (1960): 675-694; cf. also F. Piper, *Die Zahl der Opfer von Auschwitz*, Auschwitz: Verlag Staatliches Museum Oswiecim, 1993, pp. 52, 69, 119ff.

(30) May 31, 1944, op. cit. (Note).

(31) Transcript of the report of Prof. G. Jagschitz, 3rd-5th day of the trial of G. Honsik, April 29 and 30, May 4, 1992, Ref. 20e Vr 14184 and Hv 5720/90, District Court Vienna, p. 478 of the transcript.

<http://www.codoh.com/found/fndaerial.html>